



# Metal Roof Electrical Adapter

## Installation Instructions

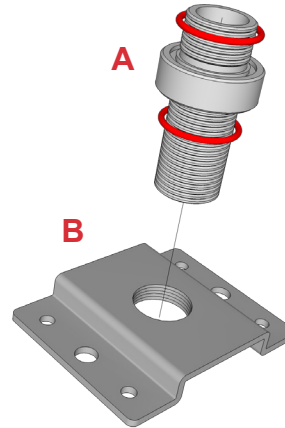
Metal Roof Electrical Adapter · ZEA-A MR  
3/4" O.D. NPSM

### Parts included:

- A. Electrical Adapter with (2) EPDM O-Rings
- B. Electrical Base Plate

### Tools needed:

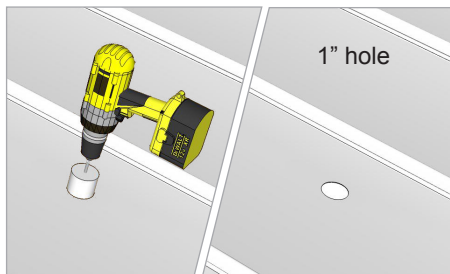
- Drill/Driver
- 1" hole saw



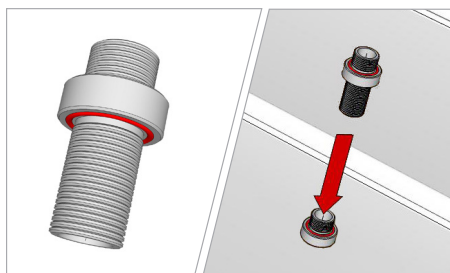
### Installation Steps

#### 1 Install Adapter

Select a spot on the roof to allow the entire diameter of the Adapter to sit flush against the roof to create a waterproof seal.



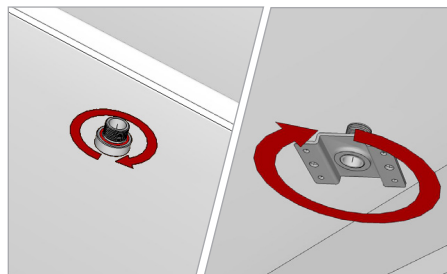
Check for obstacles, measure a minimum of 2-1/2" from joists, bracings or seams and create a center mark for your hole. Drill a through hole using a 1" hole saw.



With an O-ring pressed in the channel on the underside against the metal roof insert the long end of the Adapter into the hole.

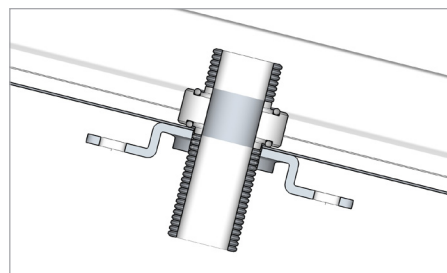
#### 2 Secure Base Plate

Thread the Adapter into the Base Plate from above or below depending upon clearance. Ensure raised feature on the Base Plate is facing up for best seal.



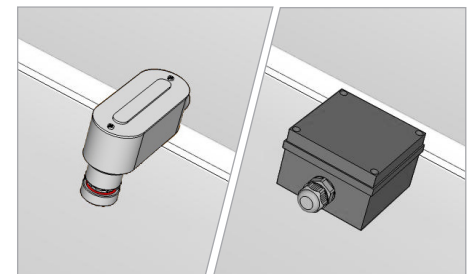
**NOTE:** Once the Base Plate is in firm contact with the metal roof material, turn the Base Plate 1/4 turn to tighten.

**DO NOT OVERTIGHTEN.**

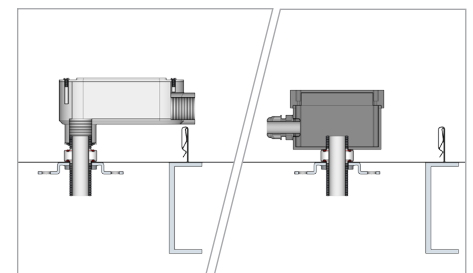


#### 3 Complete the Installation

Attach components such as a Conduit Body or Junction Box as necessary.



**Note:** when using a Combiner Box, insert the second O-Ring between the Adapter and body of the box to create a water tight seal. Secure with 3/4" NPT lock nut.



One or more patents apply to this product including without limitation: US Pat. 8,448,405; 8,479,455; 8,661,765; 8,689,517; 8,707,654; 8,707,655; 8,752,338; 8,833,032; 8,833,033; 8,869,490; 9,068,339; 9,106,023; 9,473,064; D415,847; D617,174; D636,656; D639,143; and/or D639,144.

[www.zillarac.com](http://www.zillarac.com) 720.880.6700

v051018

