

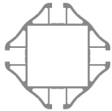


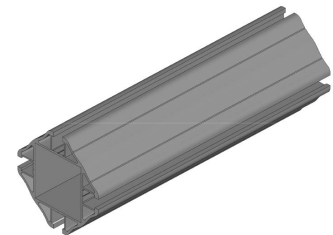
## Zilla® Rac

The superior design of Zilla® allows compatibility with any racking and standoff components. Every type of solar system installation is made simple with Zilla® Rac, therefore costs are cut down significantly. We have focused on the strength, durability, and field tested engineering in order to deliver the best racking system possible. In conjunction with the Zilla® Flashing and Mounting systems, this allows for a near flush mounting at any roof angle. In fact, no matter what your racking needs are, this system can handle it. Zilla® Rac is also perfectly integrated with NEX® Tube, providing a hybrid solution with superior strength.


Note: All NEX® and Zilla® Products are 100% interchangeable with all sizes of Zilla® Rac and Zilla® Grip.

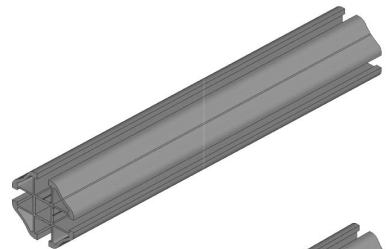
### Zilla® Rail 3.5

Product	Product Number	Description	Material	Size	Weight	Color
	ZR-3.5	For heavy loads and larger spans	6061 T6 or 6005 T5 Aluminum	3.5" x 20'	1.7 lbs./ft.	Silver
	ZR-3.5BLK					Black




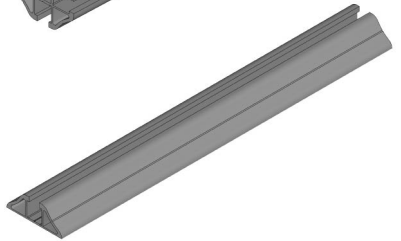
### Zilla® Rail 2.0

Product	Product Number	Description	Material	Size	Weight	Color
	ZR-2.0	For average weight loads and a wide variety of applications.	6061 T6 or 6005 T5 Aluminum	2" x 20'	1.1 lbs./ft.	Silver
	ZR-2.0BLK					Black




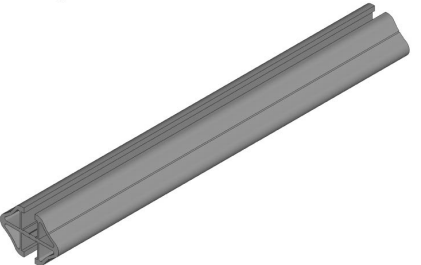
### Zilla® Grip

Product	Product Number	Description	Material	Size	Weight	Color
	ZG-2.0	For lighter loads.	6061 T6 or 6005 T5 Aluminum	2" x 8', 10', 12'	.40 lbs./ft.	Silver
	ZG-2.0BLK					Black





### Zilla® Dual Grip


Product	Product Number	Description	Material	Size	Weight	Color
	ZDG-2.0	Designed to hold light loads just like the Grip, however pieces can be attached on both sides of it to expand the opportunities. Well suited for flush mount applications.	6061 T6 or 6005 T5 Aluminum	2" x 8', 10', 12', 20'	.62 lbs./ft.	Silver
	ZDG-2.0BLK					Black




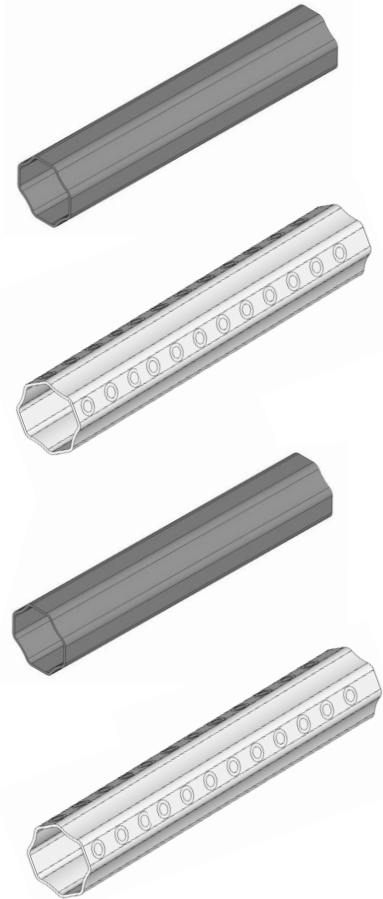
# Zilla® Rac Continued

NEX® 2" 14ga							
Product	Product Number	Description	Material	Size	Weight	Color	
	NAL20-14	For larger loads and triangle mounts.	6061 T6 OR 6005 T5 Aluminum	2" x 12', 16', 20'	0.60 lbs./ft.	Silver	
	NAL20-14BLK					Black	
	N20-14		A787 Steel			2" x 12', 20'	Silver
	N20-14BLK						Black

NEX® 2" 14ga Knockout/Perforated						
Product	Product Number	Description	Material	Size	Weight	Color
	N20-14KO/PERF	For easy bolting or attachment. Used in prefabricated triangle mounts.	A787 Steel	2" x 10', 12'	1.5 lbs./ft.	Silver
	N20-14KO/PERFBLK					Black

NEX® 2" 12ga						
Product	Product Number	Description	Material	Size	Weight	Color
	N20-12	For heavy loads and larger spans.	A787 Steel	2" x 10', 12', 20'	2.2 lbs./ft.	Silver
	N20-12BLK					Black

NEX® 2" 12ga Knockout/Perforated						
Product	Product Number	Description	Material	Size	Weight	Color
	N20-12KO/PERF	For easy bolting or attachment. Used in prefabricated triangle mounts.	A787 Steel	2" x 10', 12'	1.9 lbs./ft.	Silver
	N20-12KO/PERFBLK					Black



## Section Properties for the Full Line of Zilla® Rac Extrusions

Shape	Depth (in)	Area (in <sup>2</sup> )	Weight (plf)	I <sub>x</sub> (in <sup>4</sup> )	I <sub>y</sub> (in <sup>4</sup> )	S <sub>x</sub> (in <sup>3</sup> )	S <sub>y</sub> (in <sup>3</sup> )	r <sub>x</sub> (in)	r <sub>y</sub> (in)
3.5	3.5	1.491	1.745	1.514	1.514	0.867	0.867	1.008	1.008
2.0	2	0.911	1.066	0.279	0.279	0.279	0.279	0.554	0.554
Grip	0.71	0.342	0.4	0.019	0.099	0.043	0.099	0.236	0.537
Dual Grip	1.4	0.532	0.623	0.074	0.149	0.106	0.149	0.373	0.529
NEX2 (Aluminum)	2	0.514	0.602	0.237	0.237	0.237	0.237	0.678	0.678
NEX2 14ga (Steel)	2	0.515	1.752	0.237	0.237	0.314	0.314	0.678	0.678
NEX2 14ga (Steel KO)	2	0.364	1.496	0.168	0.168	0.224	0.224	0.676	0.676
NEX2 12ga (Steel)	2	0.646	2.198	0.29	0.29	0.388	0.388	0.67	0.67
NEX2 12ga (Steel KO)	2	0.456	1.875	0.204	2.04	0.272	0.272	0.668	0.668

## Material Properties of 6005-T5 & T6

T6 temper 6005 has an ultimate tensile strength of at least 42,000 psi (290 MPa) and yield strength of at least 35,000 psi (241 MPa). In thicknesses of 0.250 inch (6.35 mm) or less, it has elongation of 8% or more; in thicker sections, it has elongation of 10%.



77 Waneka Parkway, Lafayette, CO 80026 | 720.880.6700 | 855.670.1212 | www.zillarac.com

Copyright © 2011 Zilla Corporation. All rights reserved. Made in the U.S.A. Patented and patents pending.