

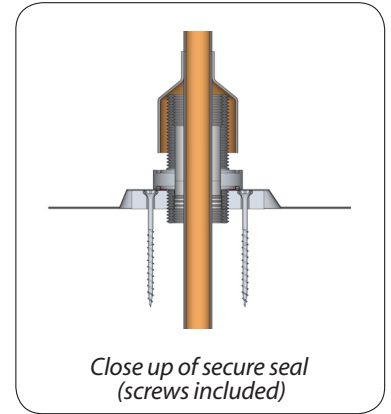
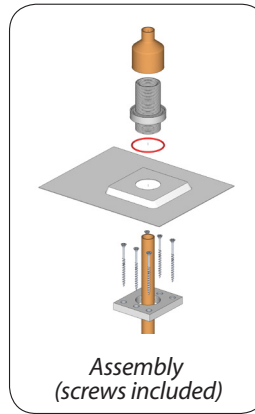


Zilla® Thermal Flashing Assembly

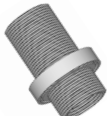

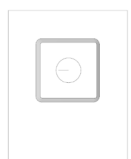
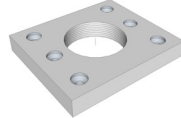

Zilla® Thermal Flashing is a unique and simple solution for flashing. It features a water tight seal, ability to mount flush with the roof or a wall, mounting directly to standard industry components and a quick and easy installation. The Zilla® Thermal Flashing allows thermal expansion while at the same time sealing out elements without the use of caulk or rubber boots.

- Run Thermal through the roof or walls without leaks!
- Package includes either a 3/4" or 1" cap
- No leaky rubber boots or UV damage
- Mounts flush to the roof or vertically on a wall
- Seals out elements
- Allows thermal expansion

Zilla® Thermal Flashing Assembly component set includes: LB Flashing Adapter, silicone o-ring, sheet metal flashing, base plate with 6 screws, and either a 3/4" OR 1" copper cap.



 - standard, quick-ship item

Product	Description	Materials	Size	Weight	Color	Finish
LB Flashing Adapter 	Threaded adapter to allow for a 1 1/4" compression fitting and a standard LB Conduit Body to be attached through the Sheet Metal Flashing and sealed when paired with a silicone o-ring.	Aluminum	1 1/4" x 11.5 NPTS threads on the O.D., 1" NPT I.D.	0.2 lb.	Silver	Bare Aluminum
		Stainless Steel		1.0 lb.		Bare Stainless
Silicone O-ring 	High temperature silicone o-ring that is encapsulated in the compression zone of the LB Flashing Adapter and Sheet Metal Flashing to eliminate water infiltration.	High temperature silicone	2-136	< 0.1 lb.	Orange	Smooth
Sheet Metal Flashing 	Sits on top of the Base Plate, and is attached with the LB Flashing Adapter. 26 ga.	Galvanized Steel	12.5"L x 10"W x 0.6" H	0.7 lb.	Black	Kynar 500 Coated Galvanized Steel
		Galvanized Steel			Silver	Bare Galvanized Steel
		Custom			Custom	Custom
Base Plate 	Base plate is attached to the roof with lag bolts on a stud and screws or lab bolts. Flashing is attached to the base plate using the LB Flashing Adapter.	Aluminum	3 7/8"L x 3"W x .52"H	0.2 lb.	Silver	Bare Aluminum
		Stainless Steel		0.4 lb.		Bare Stainless
		Zinc Plated Steel		0.4 lb.		Zinc Plated
Copper Cap 	Copper reducing coupling. CxC	Copper	3/4" x 2" OR (please specify) 1" x 2"	0.34 lb.	Copper	Bare Copper
				0.4 lb.		
				0.4 lb.		



77 Waneka Parkway, Lafayette, CO 80026
720.880.6700 | 855.670.1212 | www.zillarac.com

Copyright © 2011 Zilla Corporation. All rights reserved. Made in the U.S.A. Patented and patents pending.